



License No. 800025015
FL License # CMTL-0003
CLIA No. 10D1094068

Certificate of Analysis

Compliance Test

DRIP CANNABINOIDS
301 S MISSOURI AVE
CLEARWATER, FL 33756

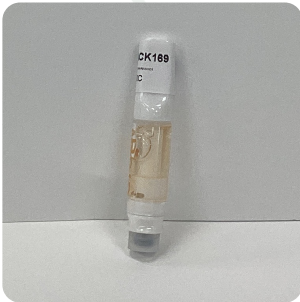
Batch # 300C
Batch Date: 2022-01-25

Test Reg State: Florida

Order # DRI220125-050001
Order Date: 2022-01-25
Sample # AACK169

Sampling Date: 2022-01-26
Lab Batch Date: 2022-01-26
Completion Date: 2022-01-28

Initial Gross Weight: 13.131 g



Product Image

Potency
Tested

**Delta 8/Delta 10
Potency 12**

Specimen Weight: 51.010 mg

| Analyte | LOD (%) | LOQ (%) | Result (mg/g) | (%) |
|--------------|----------|---------|---------------|--------|
| Delta-8 THC | 0.000026 | 0.001 | 743.900 | 74.390 |
| CBC | 0.000018 | 0.001 | | <LOQ |
| CBD | 0.000054 | 0.001 | | <LOQ |
| THCA-A | 0.000032 | 0.001 | | <LOQ |
| Delta-9 THC | 0.000013 | 0.001 | | <LOQ |
| Delta-10 THC | 0.000003 | 0.001 | | <LOQ |
| CBN | 0.000014 | 0.001 | | <LOQ |
| CBGA | 0.00008 | 0.001 | | <LOQ |
| CBG | 0.000248 | 0.001 | | <LOQ |
| CBDV | 0.000065 | 0.001 | | <LOQ |
| CBDA | 0.00001 | 0.001 | | <LOQ |
| THCV | 0.000007 | 0.001 | | <LOQ |

Tested
(LCUV)

Potency Summary

| | |
|--|--|
| Total Delta 8 74.390% | Total Delta 10 None Detected |
| Total THC None Detected | Total CBD None Detected |
| Total CBG None Detected | Total CBN None Detected |
| Other Cannabinoids None Detected | Total Cannabinoids 74.390% |

Xueli Gao Lab Toxicologist
Ph.D., DABT

Aixia Sun Lab Director/Principal Scientist
D.H.Sc., M.Sc., B.Sc., MT (AAB)



Definitions and Abbreviations used in this report: *Total CBD = CBD + (CBD-A * 0.877), *Total CBDV = CBDV + (CBDVA * 0.87), *Total THC = THCA-A * 0.877 + Delta 9 THC, *Total THCV = THCV + (THCVA * 0.87), *CBG Total = (CBGA * 0.877) + CBG, *CBN Total = (CBNA * 0.877) + CBN, *Total CBC = CBC + (CBCA * 0.877), *Total THC-O-Acetate = Delta 8 THC-O-Acetate + Delta 9 THC-O-Acetate, *Other Cannabinoids Total = Total Cannabinoids - All the listed cannabinoids on the summary section, *Total Detected Cannabinoids = Delta8-THC + Total CBN + CBT + Delta8-THCV + Total CBG + Total CBD + Total THCV + CBL + Total THC + Total CBC + Total CBDV + Delta10-THC + Total THC-O-Acetate, *Analyte Details above show the Dry Weight Concentrations unless specified as 12% moisture concentration. (mg/ml) = Milligrams per Milliliter, LOQ = Limit of Quantitation, LOD = Limit of Detection, Dilution = Dilution Factor (ppb) = Parts per Billion, (%) = Percent, (cfu/g) = Colony Forming Unit per Gram (cfu/g) = Colony Forming Unit per Gram, LOD = Limit of Detection, (µg/g) = Microgram per Gram (ppm) = Parts per Million, (ppm) = (µg/g), (aw) = aw (area ratio) = Area Ratio, (mg/Kg) = Milligram per Kilogram, *Measurement of Uncertainty = +/- 10%

This report shall not be reproduced, without written approval, from ACS Laboratory. The results of this report relate only to the material or product analyzed. Test results are confidential unless explicitly waived otherwise. Accredited by a third-party accrediting body as a competent testing laboratory pursuant to ISO/IEC 17025 of the International Organization for Standardization.